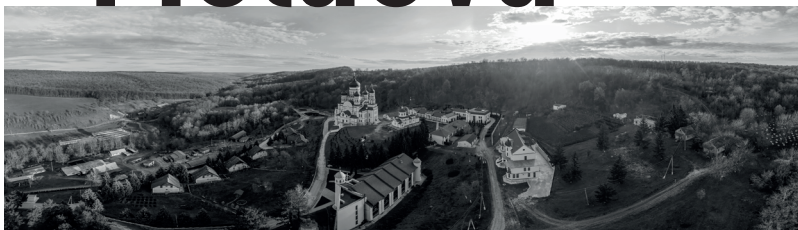




Moldova



Development Cooperation




History

- CCR active in Moldova since 2004
- Permanent in-country office opened in 2017
- 26 projects implemented all over the country
- Total budget of projects – EUR 8 million

CCR Network

- Headquarters based in Prague, Czechia
- Five cooperating country offices in Cambodia, Georgia, Iraq, Mongolia & Zambia
- Member of Caritas Europa & Caritas Internationalis

Added Value

- Strong direct implementation capacity
 - In-house expertise and rich experience in multiple fields of development cooperation
 - Cost-efficient and strong value for money through methodical utilisation of limited resources
 - Partnerships with experienced and reliable local partners
- 

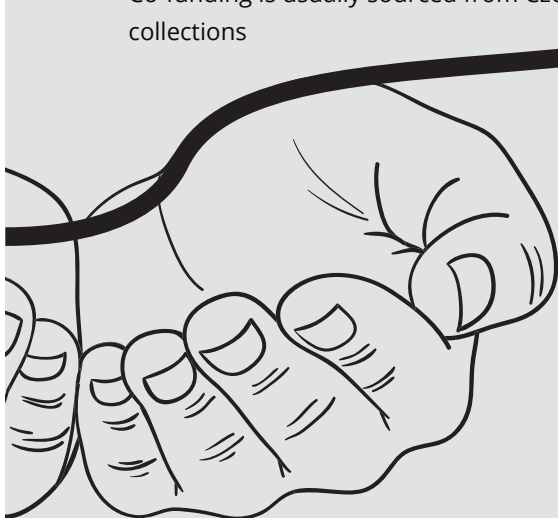
2017

Strategic priorities

- Systemic and innovative solutions in healthcare and social services
- Inclusive social development for disadvantaged categories of population
- Civil society development through mobilization, participation and involvement

Donors & Funding

- Donors through the years: Czech Ministry of Foreign Affairs & European Commission (Europe Aid, Erasmus+)
- Over 95% of the budget is covered by institutional donors
- Co-funding is usually sourced from Czech domestic collections



QA

Quality Assurance

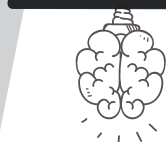
- + Holder of a DG ECHO Certificate 2021-2027 (with a perfect audit score of 10/10 from Deloitte)
- + Internal Monitoring Evaluation Accountability & Learning unit at HQ oversees capacity and capability development, mandatory reporting requirements, & policy alignment (safeguarding, complaint mechanisms etc)
- + Business development department monitors and identifies funding opportunities, engages with key stakeholders in the donor community, & performs business intelligence functions

A

Accountability

- + CCR prioritizes the “do no harm” principle in its relationship with the individuals and communities we support
- + Specific protection measures ensure that all our beneficiaries can bring up concerns and allegations of CCR staff malpractice through relevant channels
- + A zero-tolerance policy on Sexual Abuse and Exploitation applies at all times
- + Antifraud, anti-corruption, anti-money laundry measures and preventive behaviour against financing terrorism or the protection of the environment are also key features of the accountability framework.

Innovation



S

Staff

- + More than 40 long-term employees and experts involved in the implementation of projects
- + Approx. 25 HQ employees assist with strategic development, financial management, evaluation & monitoring, communications & accountability

Flagship projects

- + **Support and assistance to the social sector**
 - contributing to the decentralisation and deinstitutionalisation of the national social sector, and strengthening the quality and sustainability of its social services, as well as facilitating the cooperation between state and non-state institutions
- + **Ensuring the quality and accessibility of medical-social homecare services** - developing capacities and empowering local non-profit organisations to improve quality and access to social services, as well as advocating for and supporting normative amendments to tackle existing needs
- + **Partnership for inclusion** - reducing discrimination towards children with special educational needs and ensuring their access to early education, as well as promoting social inclusion in the education system
- + **Support for diabetes prevention and treatment**
 - increasing the quality of healthcare in terms of development of modern diagnostic services, treatment and early detection of diabetes





Caritas Czech Republic in Moldova

22 Milesti street, 2nd floor

MD-2001, Chisinau

Republic of Moldova

ccr.moldova.office@caritas.cz

www.moldova.charita.cz



facebook.com/CCRinMoldova