





## Humanitarian Aid and Development Cooperation



-  [www.facebook.com/charitavesvete](https://www.facebook.com/charitavesvete)
-  [www.linkedin.com/company/caritas-czech-republic](https://www.linkedin.com/company/caritas-czech-republic)
-  [www.instagram.com/caritas\\_czech\\_republic](https://www.instagram.com/caritas_czech_republic)

### **Caritas Czech republic**

Vladislavova 12

110 00 Prague 1

T +420 296 243 330

[sekretariat@charita.cz](mailto:sekretariat@charita.cz)

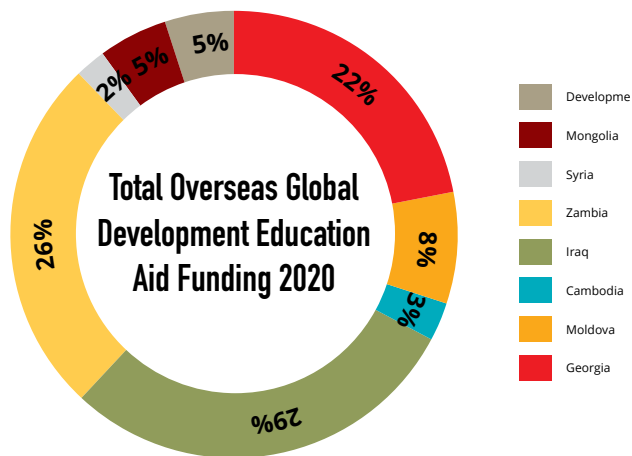
[www.charita.cz](http://www.charita.cz)

## History

- Established in 1999
- Largest domestic NGO & second biggest Czech international NGO
- Began international operations in 2004

## HQ & Missions

- HQ based in Prague
- Six missions in Zambia, Iraq, Mongolia, Georgia, Moldova & Cambodia

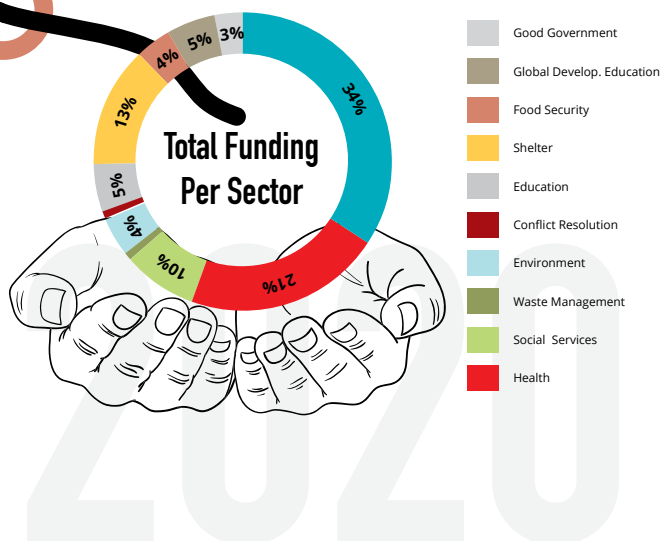


## Added Value

- Strong direct implementation capacity
- Rigorous adherence to achieving demonstrable cost effectiveness of aid
- Specialises in post-communist development issues thanks to the Czech Republic's own experience
- Sophisticated systemic solutions (e.g. healthcare quality management in Georgia)
- Long-term cooperation with state institutions
- Emergency Livelihoods Cluster co-lead in Iraq
- Main UNHCR partner for livelihoods in Zambia

## Strategic priorities

- Delivery of humanitarian aid, incl. shelter rehabilitation, disaster risk reduction, feeding programmes
- Responding to development issues, incl. livelihoods, education, social services, healthcare, and waste management.
- CCR is planning to replicate expertise in Ukraine, the Balkans & Syria



## Donors & Funding

- Main funding partners are the Czech Ministry of Foreign Affairs & the Czech Development Agency
- UNHCR, WFP, UNDP, UN Habitat, UNICEF, UN OCHA
- European Union agencies, incl. DG DEVCO, SWITCH, ENPARD
- Over 95% of the budget is covered by institutional donors
- Co-financing is often sourced from domestic collections
- Total international aid budget in 2019 was EUR 8,872,082

# QA

## Quality Assurance

- + Holder of a DG ECHO Certificate 2021-2027 (with a perfect audit score of 10/10 from Deloitte)
- + Internal Monitoring Evaluation Accountability & Learning unit at HQ oversees capacity and capability nt, mandatory reporting requirements, and policy alignment (safeguarding, complaint mechanisms etc)
- + Dedicated funding manager monitors and identifies funding opportunities, engages with key stakeholders in the donor community, & performs business intelligence functions

# A

## Accountability

- + CCR prioritizes the “do no harm” principle in its relationship with the individuals and communities we support
- + Specific protection measures ensure that all our beneficiaries can bring up concerns and allegations of CCR staff malpractice through relevant channels
- + A zero-tolerance policy on Sexual Abuse and Exploitation applies at all times
- + Antifraud, anti-corruption, anti-money laundry measures and preventive behavior against financing terrorism or the protection of the environment are also key features of the accountability framework.

# I

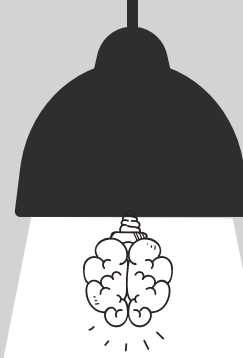
## Innovation

- + Meteorological data analysis & market information-systems for farmers in Zambia
- + 3-D printing of medical components and supplies in Iraq
- + Recycling technologies for construction materials and plastics in Mongolia
- + Promotion of financial literacy and services (saving groups, digital financial tools, cash grants) that allow communities to overcome the difficulties of inactive job markets and vulnerable banking systems
- + Integrated electronic healthcare information management, medical record web & mobile apps, & introduction of telemedicine & e-referrals in Georgia

# S

## Staff

- + Approx. 25 HQ employees, incl. management, desk officers, financial coordinators, communications & MEAL unit
- + More than 200 deployed at international missions
- + 95% of mission staff are local employees



Innovation

200+ missions

# Zambia

- + Opened 2013
- + Approx. 150 staff
- + Operates in Lusaka and in the Western, Luapula, Central, and North-Western regions
- + Specialises in support for vulnerable and disadvantaged people, including refugees, early childhood and pre- and post-natal healthcare, education and livelihoods (mainly agriculture)
- + Main funding partners: Czech Development Agency and the Czech Ministry of Foreign Affairs, UNHCR, WFP, Zambian Financial Sector Deepening Limited (FSDZ), Good Neighbour & RefugePoint
- + Main UNHCR partner for livelihoods



2013...

Country Offices

# Iraq

- + Opened 2013
- + Approx. 45 staff
- + Operates in the six northern regions of Irbil, Ninewa, Dohuk, Kirkuk, Sulaymaniyah, and Salah al-Din
- + Humanitarian expertise: shelter, WASH (water, sanitation and hygiene), primary healthcare support, & emergency non-foodstuff goods distribution.
- + Development expertise: support for livelihoods and food safety, shelter rehabilitation, food for schools, conflict mediation & reconciliation, & access to healthcare services.
- + Donors include Czech Ministry of Foreign Affairs and the Czech Ministry of Interior, Secours Catholique-Caritas France, the French Ministry of Europe and Foreign Affairs, UN HABITAT, UN OCHA, & the World Food Programme



2013...

Country Offices

# Georgia

- + Aid began in 2008 & permanent mission opened in Tbilisi in 2015
- + All staff are local other than the mission head
- + Main donors: Czech Development Agency, EU ENPARD, UNDP, Slovak Aid, UNICEF
- + Specialises in systemic solutions in healthcare and social services, rural development and environmental protection
- + A large focus of activities is in rural mountainous regions where few other NGOs operate

2008...



local staff

# Mongolia

- + Opened in 2008
- + All staff are local other than the mission head
- + Operates in Ulaan Baatar, Darkhan, Selenge, Tuv, Uvurkhangai, Bulgan, Zavkhan and Khentii provinces
- + Main donors: Czech Development Agency & EU SWITCH
- + Specialises in social services, public healthcare, pre-school education, animal husbandry, vocational education and training, waste management and youth development



2008...

# Moldova

- + Opened in 2004
- + All staff are local
- + Main donor: Czech Development Agency  
Operates through an implementation agent called Pro-Development
- + Focuses primarily on homecare, health, civil society development, agriculture, livelihood support and social inclusion

Local staff



2004...

Country Offices

# Cambodia

- + Opened in 2011
- + Smallest of CCR missions
- + Main donor: Czech Development Agency
- + Specialises in Disaster Risk Reduction & accessibility to healthcare



2011...

healthcare

Country Offices